

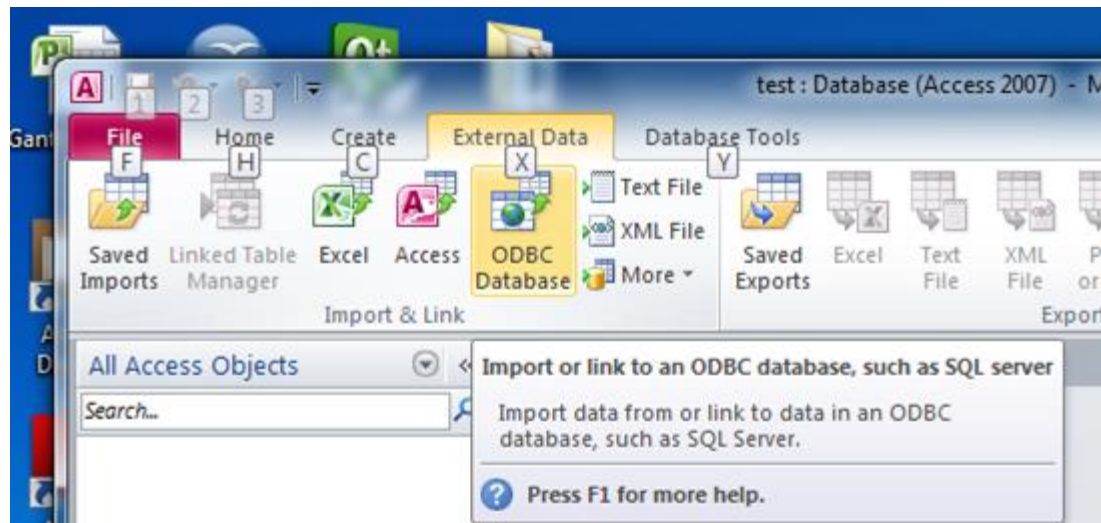
# Creating a prototype by using MS Access

Jouni Huotari

27.10.2015

# Open MS Access and create an empty database

Create an ODBC connection to the actual  
database (e.g. MySQL database)



## Select the source and destination of the data

Specify how and where you want to store the data in the current database.

**Import the source data into a new table in the current database.**

If the specified object does not exist, Access will create it. If the specified object already exists, Access will append a number to the name of the imported object. Changes made to source objects (including data in tables) will not be reflected in the current database.

**Link to the data source by creating a linked table.**

Access will create a table that will maintain a link to the source data. Changes made to the data in Access will be reflected in the source and vice versa.

OK

Cancel

### Select Data Source


File Data Source | **Machine Data Source**

Data Source Name	Type	Description
dBASE Files	User	
Excel Files	User	
MS Access Database	User	
testi	User	MySQL-test
Visio Database Samples	User	

[New...](#)

A Machine Data Source is specific to this machine, and cannot be shared. "User" data sources are specific to a user on this machine. "System" data sources can be used by all users on this machine, or by a system-wide service.

### Create New Data Source



Select a type of data source:


**User Data Source (Applies to this machine only)**

System Data Source (Applies to this machine only)

Selecting User Data Source creates a data source which is specific to this machine, and visible only to you.

[< Back](#)
[Next >](#)
[Cancel](#)

### Create New Data Source




Select a driver for which you want to set up a data source.

Name
Microsoft Paradox Driver (*.db)
Microsoft Paradox-Treiber (*.db)
Microsoft Text Driver (*.txt; *.csv)
Microsoft Text-Treiber (*.txt; *.csv)
Microsoft Visual FoxPro Driver
Microsoft Visual FoxPro-Treiber
<b>MySQL ODBC 5.1 Driver</b>
SQL Server
SQL Server Native Client 10.0

[< Back](#)
[Next >](#)
[Cancel](#)

### Create New Data Source



When you click Finish, you will create the data source which you have just configured. The driver may prompt you for more information.

User Data Source  
Driver: MySQL ODBC 5.1 Driver

[< Back](#)
[Finish](#)
[Cancel](#)

### MySQL Connector/ODBC Data Source Configuration

**MySQL Connector/ODBC**

Connection Parameters

Data Source Name:

Description:

TCP/IP Server:  Port:

Named Pipe:

User:

Password:

Database:

### Link Tables

Tables

- dept
- emps
- sdept

Save password

### Select Unique Record Identifier

Fields in table 'sdept':

- DEPT
- MANAGER
- CODE

To ensure data integrity and to update records, you must choose a field or fields that uniquely identify each record. Select up to ten fields.

File Home Create External Data Database Tools

Import & Link: Saved Imports, Linked Table Manager, Excel, Access, ODBC Database, More

Export: Saved Exports, Excel, Text File, XML File, PDF or XPS, E-mail, More

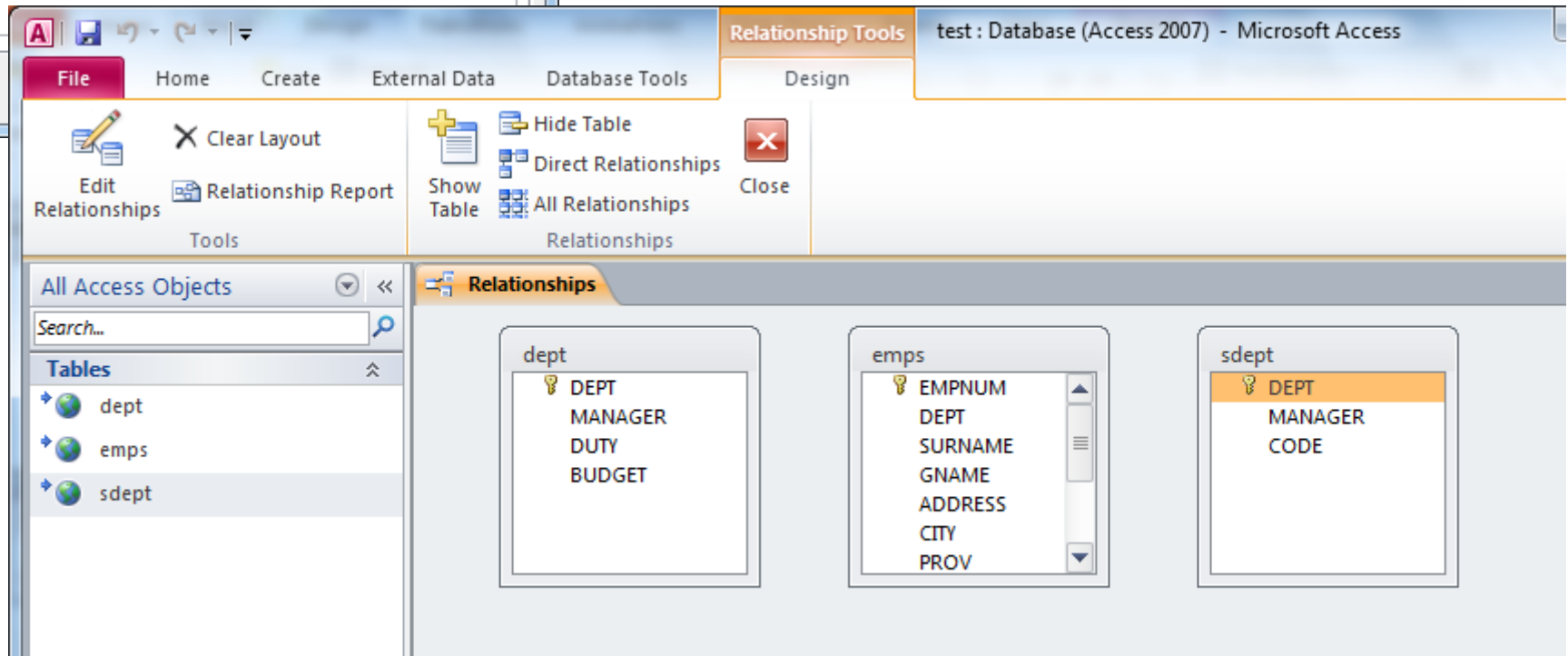
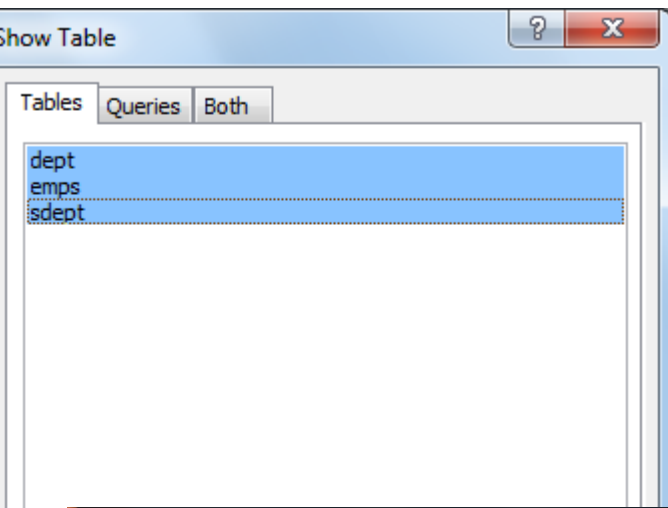
Collect Data: Create E-mail, Manage Replies

All Access Objects

Search...

Tables

- dept
- emps
- sdept



File Home Create External Data Database Tools Design

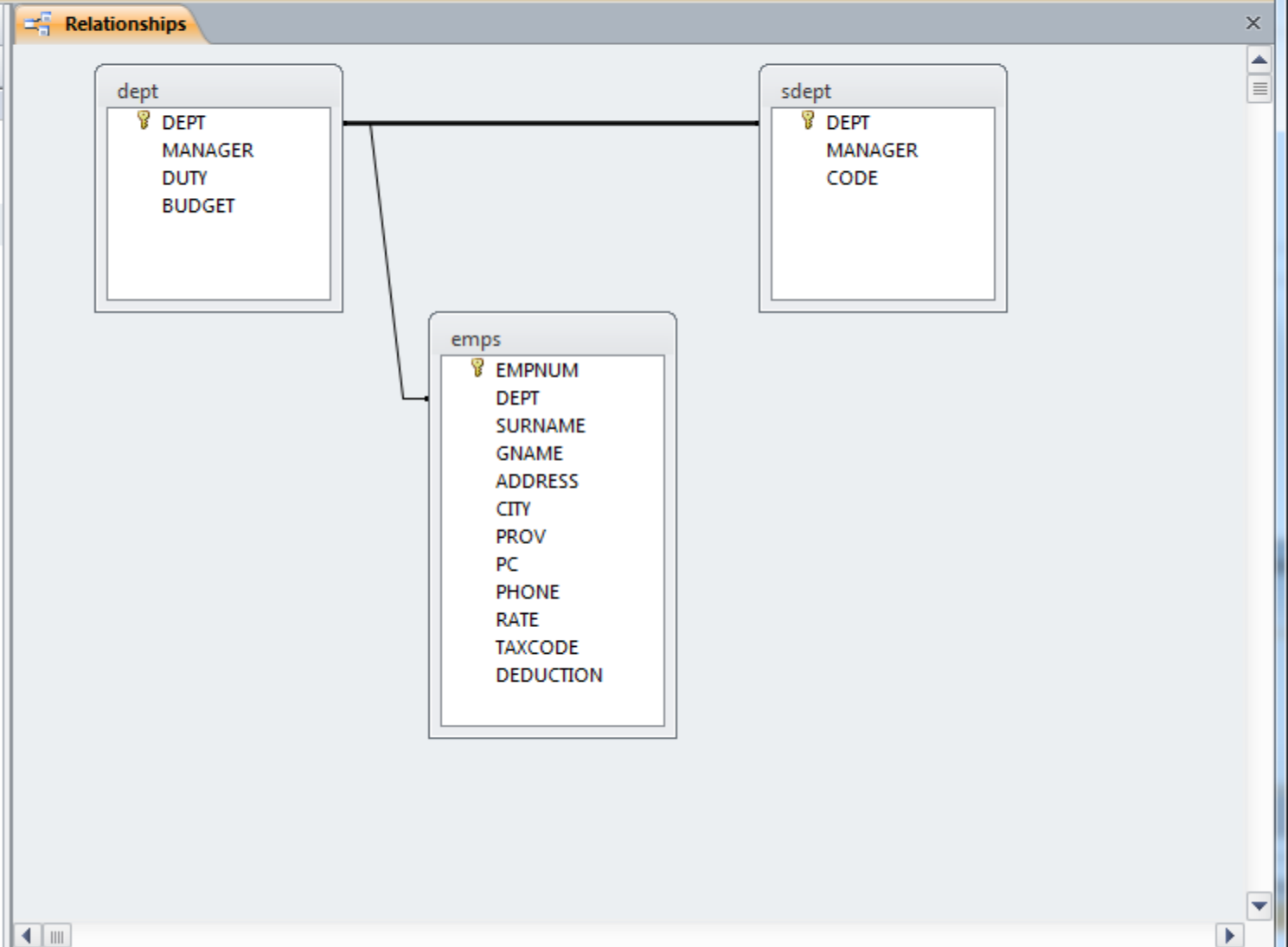
Edit Relationships Relationship Report Clear Layout Hide Table Direct Relationships All Relationships Show Table Relationships Close

All Access Objects

Search...

Tables

- dept
- emps
- sdept





# Create Form

Käyttöliittymä (prototyyppi) MS Accessilla - Microsoft PowerPoint

test : Database (Access 2007) - Microsoft Access

**File** Home Create External Data Database Tools **Design**

Application Parts Templates Table Table Design SharePoint Lists Queries Query Wizard Query Design Form Form Design Blank Form More Forms Report Report Design Blank Report Labels Macro

All Access Objects Search... Tables dept emps sdept

**Relationships** Form

Create a form that lets you enter information for one record at a time.

Press F1 for more help.

**dept**

- DEPT
- MANAGER
- DUTY
- BUDGET

**sdept**

- DEPT
- MANAGER
- CODE

**emps**

- EMPNUM
- DEPT
- SURNAME
- GNAME
- ADDRESS
- CITY
- PROV
- PC
- PHONE
- RATE
- TAXCODE
- DEDUCTION

Microsoft Access 2007 ribbon: File, Home, Create, External Data, Database Tools, Design, Arrange, Format. Title bar: test : Database (Access 2007) - Microsoft Access. Design Tools: Views, Themes, Controls, Header / Footer, Tools.

All Access Objects

Search...

Tables

- dept
- emps
- sdept

Forms

- emps subform

Relationships - dept

Form Header

dept	
------	--

Detail

DEPT	DEPT
MANAGER	MANAGER
DUTY	DUTY
BUDGET	BUDGET

emps subform

Form Header

Detail

EMPNUM	EMPNUM
DEPT	DEPT
SURNAME	SURNAME
GNAME	GNAME
ADDRESS	ADDRESS

File Home Create External Data Database Tools

View Paste Copy Format Painter Filter Filter Ascending Descending Remove Sort Selection Advanced Toggle Filter Refresh All Save Delete More Records Find Replace Go To Select Find Text Formatting

All Access Objects

Search...

Tables

- dept
- emps
- sdept

Forms

- emps subform

Relationships dept

dept

DEPT

MANAGER

DUTY

BUDGET

emps subform

EMPNUM	DEPT	SURNAME	GNAME	ADDRESS	CITY
1	A	KOO	SARA	234 WEST ST	BANFF
10	A	SMITH	ALICE	123 MAIN ST	EDMON
24	A	RINAS	ROB	521 ARMSTRONG DR	EDMON
25	A	ALLAN	RANDY	516 ARMSTRONG CRES	EDMON
33	A	WALSH	BILL	135 COTTON AVE	YORK
48	A	GROSSER	COLIN	520 PARIS ST	EDMON
49	A	NORMAN	VINCE	701 MORGAN CRES	EDMON
61	A	THOMPSON	BRAD	105 MAIN ST	EDMON
72	A	FLETCHER	RENE	623 WEST ST	EDMON
73	A	CURRY	PETER	104 PARIS ST	EDMON
*	A				