

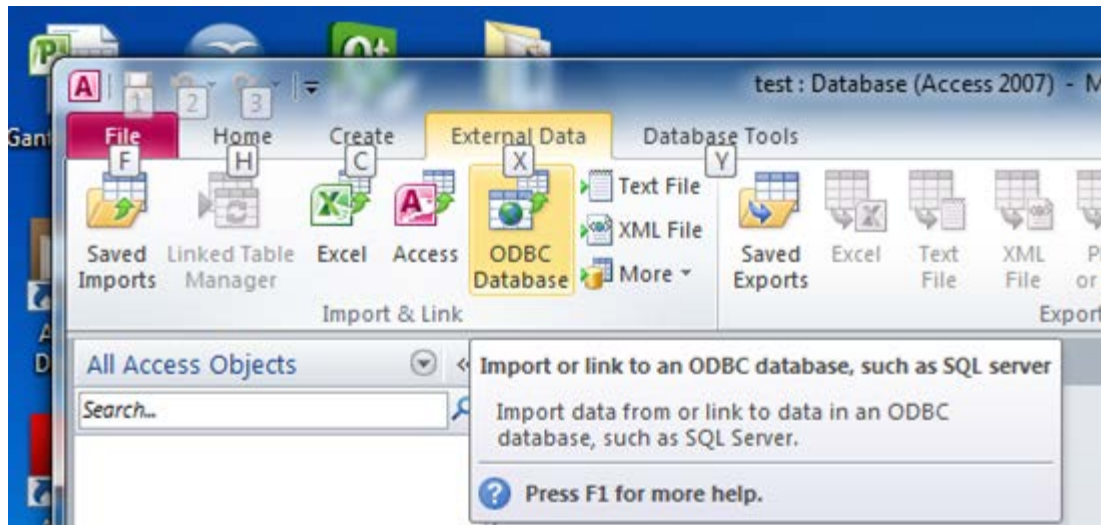
Creating a prototype: using ODBC and Microsoft Access

Jouni Huotari

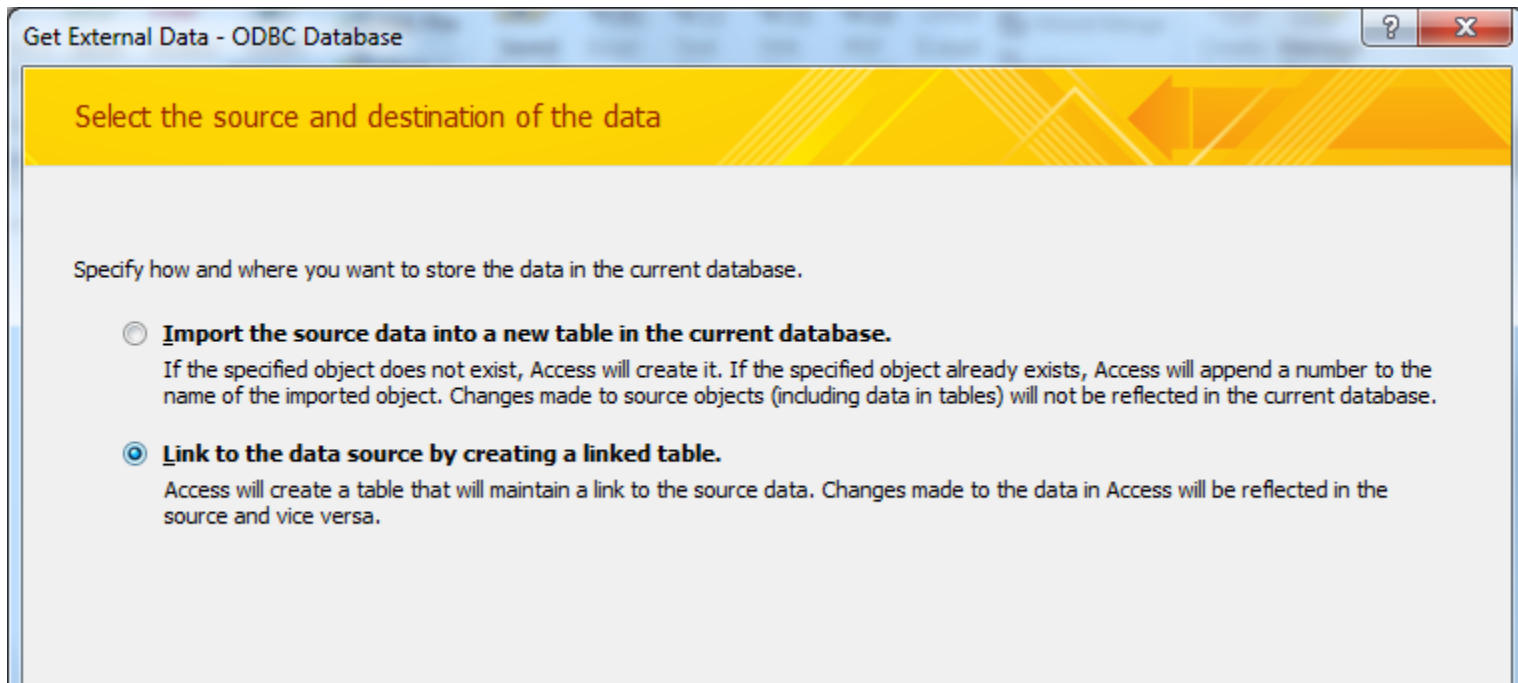
21.3.2019



Open MS Access and create an empty database



Create an ODBC connection to the actual database (e.g. MySQL database)



Select Data Source


File Data Source Machine Data Source

Data Source Name	Type	Description
Excel Files	User	
MS Access Database	User	
MySQL testi	User	
MySQL-test	User	Kokeilua
MySQL-testausta	User	
PROJ_HENK	User	Ari Hovin esimerkkitietokanta
TOP	User	Todennäköinen esimerkki

New...

A Machine Data Source is specific to this machine, and cannot be shared. "User" data sources are specific to a user on this machine. "System" data sources can be used by all users on this machine, or by a system-wide service.

ODBC System DSN Warning

 You are logged on with non-Administrative privileges. System DSNs could not be created or modified

OK

Create New Data Source

Select a driver for which you want to set up a data source.

Name	
Microsoft Access dBASE Driver (*.dbf, *.ndx, *.mdx)	1
Microsoft Access Driver (*.mdb, *.accdb)	1
Microsoft Access Text Driver (*.txt, *.csv)	1
Microsoft Excel Driver (*.xls, *.xlsx, *.xlsm, *.xlsb)	1
MySQL ODBC 5.3 ANSI Driver	5
MySQL ODBC 5.3 Unicode Driver	5
MySQL ODBC 8.0 ANSI Driver	8
MySQL ODBC 8.0 Unicode Driver	8

Advanced...

< Back Next > Cancel

Note: Unicode is usually better but in Labranet currently only ANSI driver works


Create New Data Source

When you click Finish, you will create the data source which you have just configured. The driver may prompt you for more information.

User Data Source
Driver: MySQL ODBC 5.3 Unicode Driver

< Back Finish Cancel

MySQL Connector/ODBC Data Source Configuration



Connection Parameters

Data Source Name:

Description:

TCP/IP Server: Port:

Named Pipe:

User:

Password:

Database:

Link Tables

Tables

- dept
- emps
- sdept

Save password

Select Unique Record Identifier

Fields in table 'sdept':

- DEPT
- MANAGER
- CODE

To ensure data integrity and to update records, you must choose a field or fields that uniquely identify each record. Select up to ten fields.

File Home Create External Data Database Tools

Import & Link: Saved Imports, Linked Table Manager, Excel, Access, ODBC Database, More

Export: Saved Exports, Excel, Text File, XML File, PDF or XPS, E-mail, More

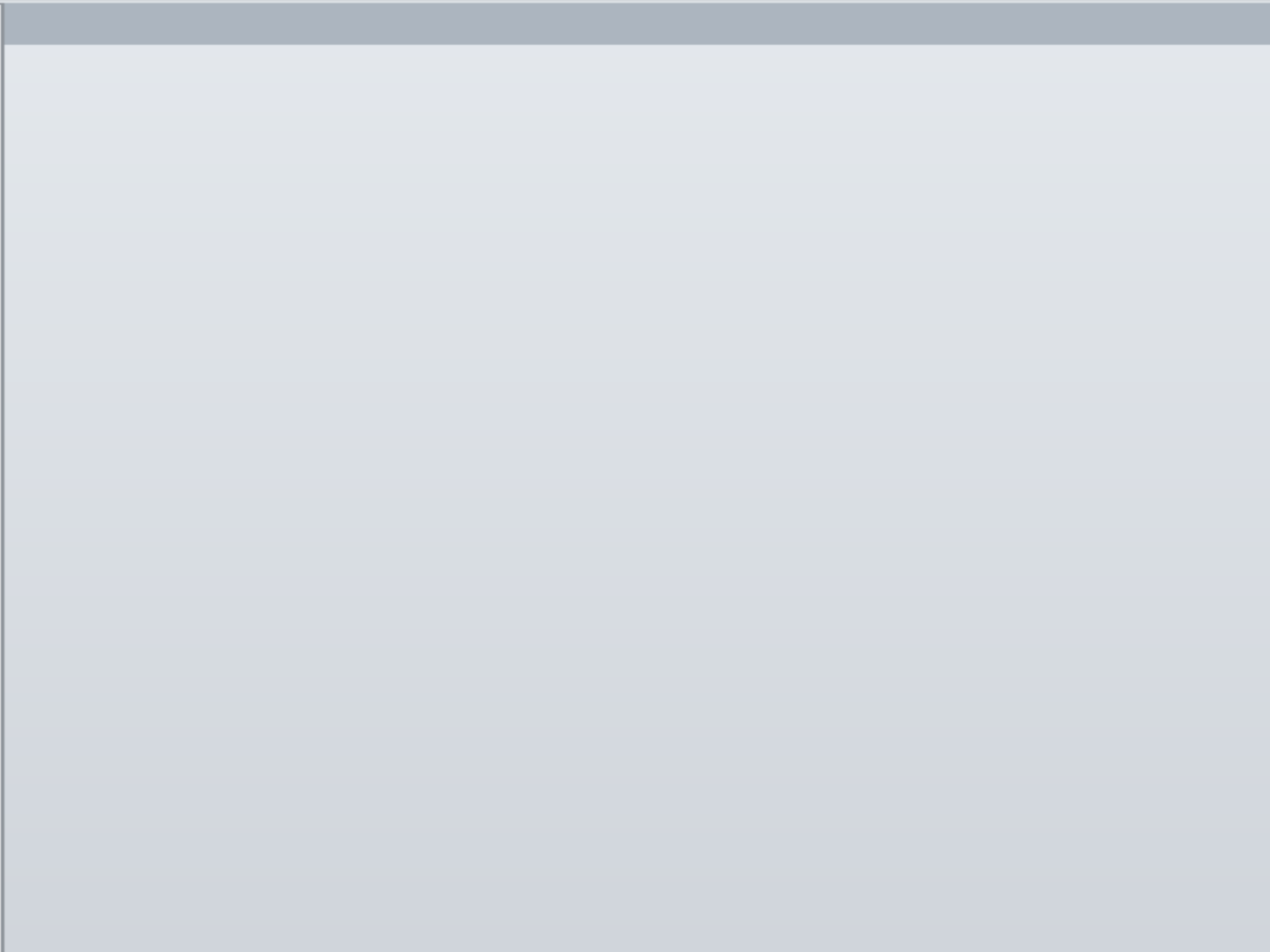
Collect Data: Create E-mail, Manage Replies

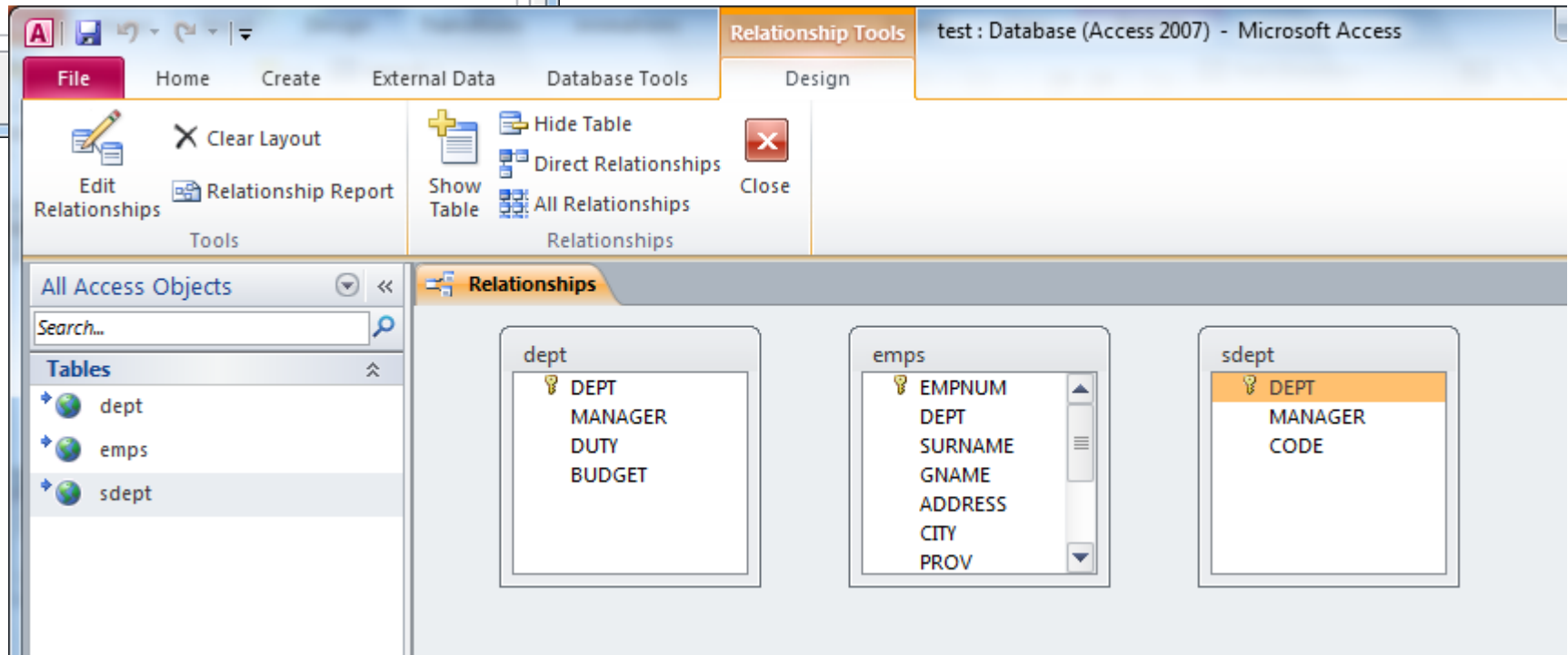
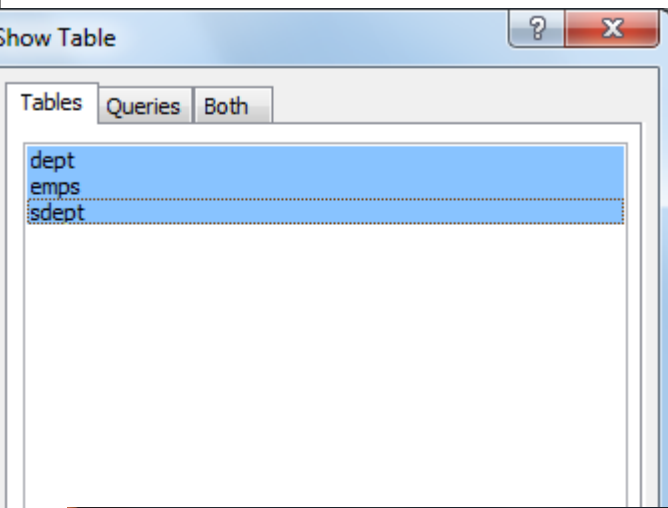
All Access Objects

Search...

Tables

- dept
- emps
- sdept





File Home Create External Data Database Tools Design

Edit Relationships Relationship Report Tools

Hide Table Direct Relationships All Relationships Relationships

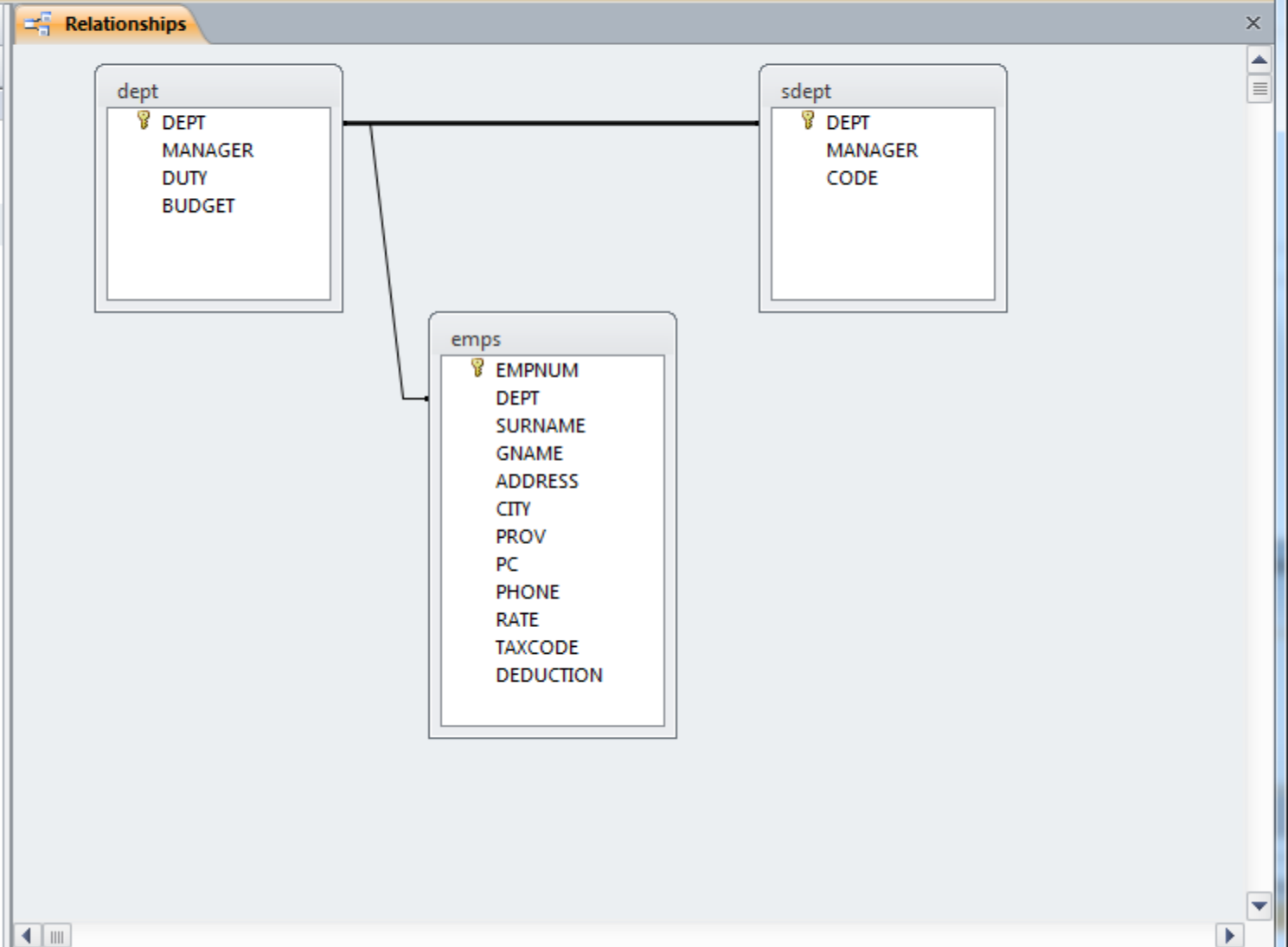
Close

All Access Objects

Search...

Tables

- dept
- emps
- sdept



Create Form

The screenshot shows the Microsoft Access interface with the 'Form' ribbon tab selected. The ribbon includes options like 'Form Wizard', 'Form Design', 'Blank Form', and 'More Forms'. A tooltip is displayed over the 'Form' icon, stating: 'Create a form that lets you enter information for one record at a time. Press F1 for more help.'

The 'All Access Objects' pane on the left shows the 'Tables' section with 'dept', 'emps', and 'sdept' listed. The 'Relationships' pane shows a relationship between 'dept' and 'sdept'. The 'dept' table fields are DEPT, MAN, DUT, and BUDGET. The 'sdept' table field is DEPT MANAGER CODE. The 'emps' table fields are EMPNUM, DEPT, SURNAME, GNAME, ADDRESS, CITY, PROV, PC, PHONE, RATE, TAXCODE, and DEDUCTION.

Microsoft Access 2007 ribbon: File, Home, Create, External Data, Database Tools, Design, Arrange, Format. Title bar: test : Database (Access 2007) - Microsoft Access. Design Tools: Views, Themes, Controls, Header / Footer, Tools.

All Access Objects

Search...

Tables

- dept
- emps
- sdept

Forms

- emps subform

Relationships - dept

Form Header

dept

Detail

DEPT	DEPT
MANAGER	MANAGER
DUTY	DUTY
BUDGET	BUDGET

emps subform

Form Header

Detail

EMPNUM	EMPNUM
DEPT	DEPT
SURNAME	SURNAME
GNAME	GNAME
ADDRESS	ADDRESS

File Home Create External Data Database Tools

View Paste Copy Format Painter Filter Filter Ascending Descending Selection Advanced Remove Sort Toggle Filter Refresh All Delete More Records New Save Spelling Spelling Find Go To Select Find Replace Go To Select Text Formatting

All Access Objects

Search...

Tables

- dept
- emps
- sdept

Forms

- emps subform

Relationships dept

dept

DEPT

MANAGER

DUTY

BUDGET

emps subform

EMPNUM	DEPT	SURNAME	GNAME	ADDRESS	CITY
1	A	KOO	SARA	234 WEST ST	BANFF
10	A	SMITH	ALICE	123 MAIN ST	EDMON
24	A	RINAS	ROB	521 ARMSTRONG DR	EDMON
25	A	ALLAN	RANDY	516 ARMSTRONG CRES	EDMON
33	A	WALSH	BILL	135 COTTON AVE	YORK
48	A	GROSSER	COLIN	520 PARIS ST	EDMON
49	A	NORMAN	VINCE	701 MORGAN CRES	EDMON
61	A	THOMPSON	BRAD	105 MAIN ST	EDMON
72	A	FLETCHER	RENE	623 WEST ST	EDMON
73	A	CURRY	PETER	104 PARIS ST	EDMON
*	A				